

OSAKA/UMEDA

Meeting Planner's Guide



Citywide Canvas for MICE Wonders Engage, Entertain, Enlighten.

Osaka Umeda – Intersection of International Ambition & Opportunity.

Three Key Features of Osaka Umeda as a MICE City

Feature

1

Convenience Redefined: Business, Commerce, and Entertainment in Seamless Symphony.

The overwhelming convenience transforms the entire city into a venue for events. It flexibly meets the needs of modern event participants who blur the lines between work and leisure, allowing for exploration of the city after academic conferences or enjoying cultural experiences during work breaks.

Feature

2

The City That Stands with Every Challenger.

Umeda is the backdrop for a number of public-private partnerships pursuing innovation. Coupled with Osakans' penchant for extending second chances, Umeda supports the pioneering spirit.

Feature

3

The Heart of Kansai, Complete Immersion in the Essence of Japan.

From Osaka Station, the largest terminals in western Japan, easy access is available not only to abundant attractions within Osaka city but also to historic cities such as Kyoto and Nara. You can also easily enjoy traditional performing arts and local culture.

Fact 1

Japan's Premier Commercial Hub

Surpassing Shinjuku and Shibuya, this area boasts Japan's highest concentration of commercial ventures, offering everything from upscale department stores to retro dining alleys and theaters. The endless opportunities for shopping and gourmet dining allow visitors to enjoy varieties of meals every day, ensuring that the after-convention experience is always fresh and engaging.

Comparison of Concentration of Commercial Facilities by Region (Store Area(m²))

Commercial district (official designation)	Store Area (m ²)
Umeda (Kita-ku, Osaka)	773,657
Namba, Shinsaibashi (Chuo-ku, Osaka)	452,279
Tennoji (Abeno-ku, Osaka)	235,344
Shibuya, Omotesando (Shibuya-ku, Tokyo)	412,490
Shinjuku (Shinjuku-ku, Tokyo)	390,353
Ikebukuro (Toshima-ku, Tokyo)	387,668
Ginza, Nihonbashi (Chuo-ku, Tokyo)	407,303
Marunouchi, Yutakucho (Chiyoda-ku, Tokyo)	351,382

Source: Toyo Keizai, Inc. "List of Large-Scale Retail Outlets 2024" Store area calculated on basis of official designation in the above table. Stores surveyed are those with areas in excess of 1,000m², as of June 2023, based on data on large-scale stores registered with prefectural governments under the Large-Scale Retail Stores Location Law.

Fact 2

Leading in the Volume of Hotel Concentration

With over 3,000 hotel rooms within an 800m radius of the main station (as of 2023), it holds the top spot in Japan for hotel room availability. A diverse range of accommodations from five-star to more affordable options are clustered together, facilitating smooth hotel selection for organizers.



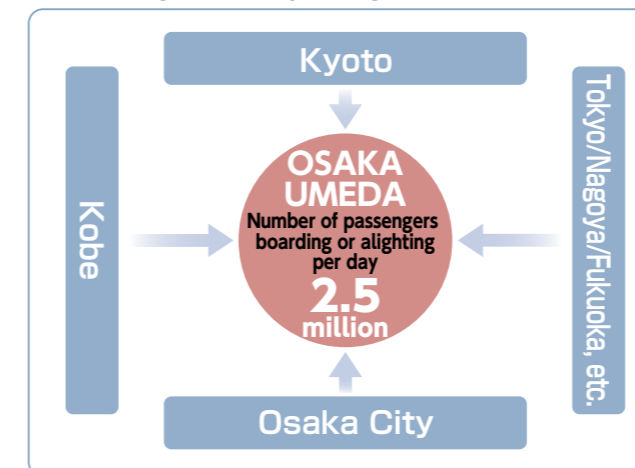
Hotel Hankyu International Room "Superior Twin"

Fact 3

Daily Foot Traffic of 2.5 Million Daily Passengers

Umeda, the largest downtown area in western Japan, attracts a vast crowd of workers, tourists, and students daily. This drawing power enables large-scale advertising campaigns and experiential promotions targeting the general consumer, leveraging its high pedestrian traffic for effective marketing.

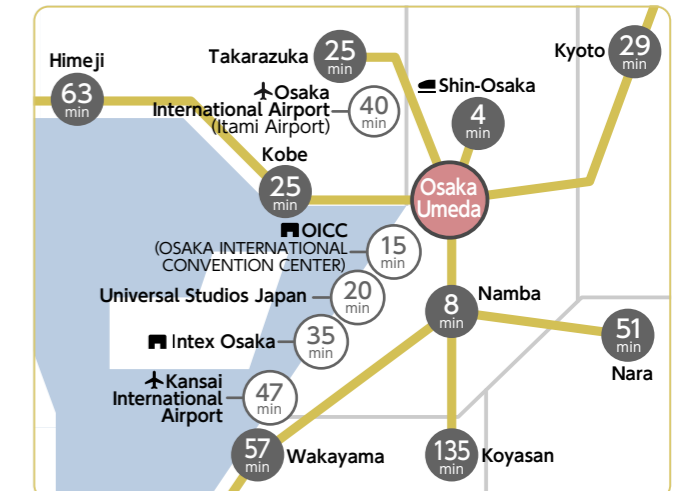
Number of Passengers Boarding or Alighting at Railway Stations per Day



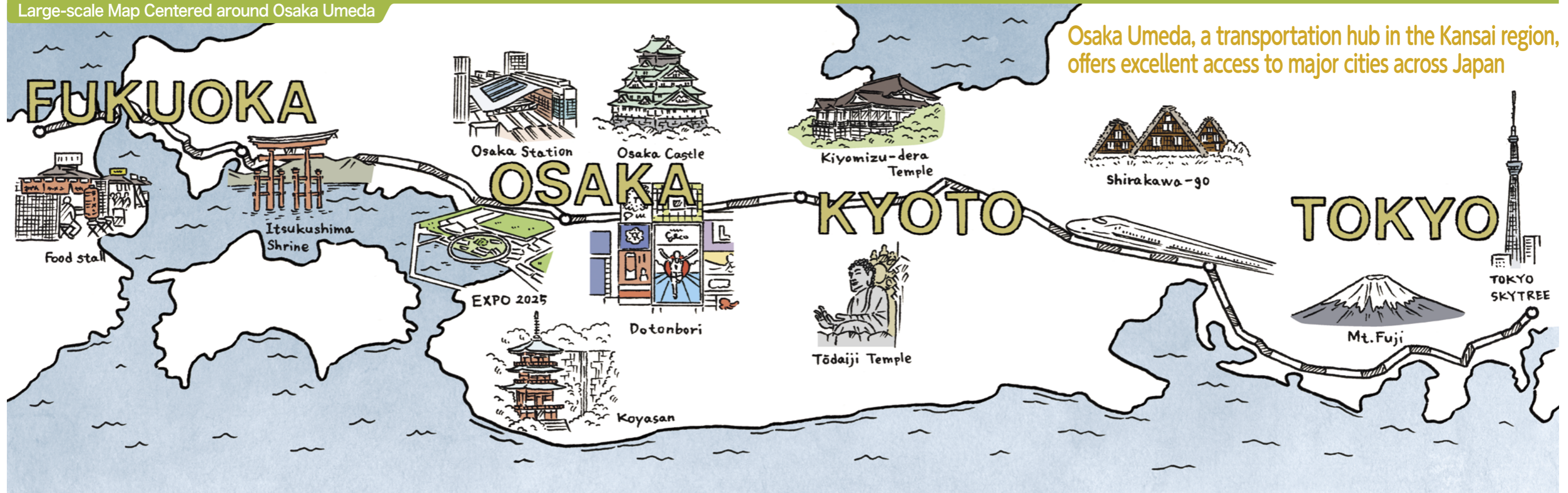
Fact 4

Exceptional Transport Connectivity

Centered around JR Osaka Station, the Umeda area offers convenient access for conference attendees from both domestic and international locations. It's a 47-minute journey from Kansai International Airport, the air gateway to the region, and just 4 minutes from Shin-Osaka Station, the bullet train hub. Additionally, it offers quick access to Kyoto in 29 minutes and Nara in 51 minutes, making it an ideal location for attendees looking to explore more of Japan.



Large-scale Map Centered around Osaka Umeda



OSAKA / UMEDA TOPICS

September 2024:
Parcial Opening of
GRAND GREEN OSAKA



A new development in front of JR Osaka Station, "GRAND GREEN OSAKA" features "Umekita Park," which will be the world's largest urban park directly connected to a major terminal station, covering approximately 45,000m². Offices, commercial facilities, core functional facilities (including innovation and MICE facilities), hotels, and residences will be integrated around Umekita Park in a cohesive and seamless manner. Among the new establishments will include the most luxurious brand of Hilton, "WALDORF ASTORIA" and two other hotel brands, all of which will add up to over 1,000 rooms. Additionally, the MICE facility "Congress Square Grand Green Osaka" will consist of two halls and twelve meeting rooms, available for conferences and business meetings.

Images provided by GRAND GREEN OSAKA Developers
*These images are of plans in progress and are subject to change.



Umekita Park



WALDORF ASTORIA Osaka "Peacock Alley"

CHECK!
Expo 2025 Osaka, Kansai
Expo 2025 Osaka, Kansai, Japan will be held over 184 days from April to October at Yumeshima in Osaka. It is accessible in about 30 minutes from Umeda by subway.

MICE TOPICS

Academic-Industrial Collaboration Conference on Life Sciences 

- Event Name** ▶ Bioeconomy Hub Japan 2025
- Theme** ▶ Planetary Health
- Overview** ▶ This conference will gather leading thought leaders from Japan to discuss global social issues related to the environment, energy, food, and health.
- Scheduled Period** ▶ April 25
- Venue** ▶ Herbis Hall
- Organizer** ▶ Bioeconomy Hub Japan Executive Committee

Organizer's Statement

Umeda: The Life Sciences Hub of Kansai and Japan

Kansai is a leading force in Japan's life sciences, with a concentration of pharmaceutical companies, medical equipment manufacturers, research laboratories, universities, and research institutions. Umeda is at the heart of this region. Its accessibility was a key factor in choosing it as the venue for this event, making it easier to invite experts from industry, academia, and government both from within Japan and overseas, and ensuring a comfortable experience for all attendees.



Mr. Tsuneaki Sakata
Vice-Chairman and General Coordinator, BioCommunity Kansai

International Conference on Innovation 

- Event Name** ▶ ISPIM Connects Osaka Conference
- Theme** ▶ Innovation
- Overview** ▶ Innovation experts from 30 countries will gather in Osaka, Umeda. The conference is organized in collaboration with the Osaka-Kansai Expo, the American Chamber of Commerce in Japan, and local universities.
- Scheduled Period** ▶ December 24
- Venue** ▶ Kansai University Umeda Campus: KANDAI Me RISE
- Organizer** ▶ ISPIM

Organizer's Statement

A convenient city that continues to evolve, with a variety of content within walking distance

Umeda is not only equipped with conference facilities but also offers hotels, restaurants, bars, and shopping malls, making it extremely convenient. As a cultural city, Osaka is a hub for transmitting culture and never runs out of charms to attract foreign MICE visitors. With the upcoming opening of GRAND GREEN OSAKA, we are also looking forward to an even richer array of attractions and content in Umeda.



Mr. Iain Bitran
Executive Director of ISPIM

Convention/Exhibition Halls

Meeting facilities in the Osaka Umeda area that satisfy diverse needs, including halls that can host a variety of events and those directly connected to nearby stations.

Various venue arrangements are available for conferences, exhibitions, seminars, lectures, and breakout sessions of academic conferences.

Hall	Largest hall	Area (m ²)	Capacity (people)	
			Theater	School
UMEDA SOUTH HALL [Contact] +81-6-4256-5560 [Address] Osaka Umeda Twin Towers South 11F, 1-13-1 Umeda, Kita-ku, Osaka Total area for rent: 1,703m ² Maximum capacity: 1,040 people Total no. of conference rooms: 2 rooms	Large Hall	882	900	600
UMEDA SKY BUILDING (Conference Room and Event Hall) [Contact] +81-6-6440-3901 [Address] 1-1-88 Oyodonaka, Kita-ku, Osaka Total area for rent: 2,349m ² Maximum capacity: 2,672 people Total no. of conference rooms: 15 rooms	Stella Hall	684	702	432
Umeda Center Building (Crystal Hall, Rental Conference Room, White Hall) [Contact] +81-6-6373-9981 [Address] 2-4-12 Nakazaki-nishi, Kita-ku, Osaka Total area for rent: 2,383m ² Maximum capacity: 1,399 people Total no. of conference rooms: 19 rooms	Crystal Hall	839	600-700	500
OVAL HALL [Contact] +81-6-6346-8351 [Address] 3-4-5 Umeda, Kita-ku, Osaka Total area for rent: 679m ² Maximum capacity: 796 people Total no. of conference rooms: 9 rooms	OVAL HALL	339	486	333
Knowledge Capital [Contact] +81-6-6372-6530 [Address] Grand Front Osaka North Building, 3-1 Ofuka-cho, Kita-ku, Osaka Total area for rent: 1,925m ² Maximum capacity: 1,037 people Total no. of conference rooms: 15 rooms	Knowledge Theater (Basic Layout)	429	381	—
Knowledge Capital Congrès Convention Center [Contact] +81-6-6292-6911 [Address] Grand Front Osaka North Building B2F, 3-1 Ofuka-cho, Kita-ku, Osaka Total area for rent: 3,051m ² Maximum capacity: 2,578 people Total no. of conference rooms: 15 rooms	Hall A+B+C	1,700	1,472	708
HERBIS HALL [Contact] +81-6-6343-7800 [Address] HERBIS OSAKA B2F, 2-5-25 Umeda, Kita-ku, Osaka Total area for rent: 1,676m ² Maximum capacity: 1,300 people Total no. of conference rooms: 2 rooms	Large Hall	914	1,000	600
BREEZÉ PLAZA [Contact] +81-6-6344-4888 [Address] BREEZÉ TOWER 7/8F, 2-4-9 Umeda, Kita-ku, Osaka Total area for rent: 622m ² Maximum capacity: 618 people Total no. of conference rooms: 9 rooms	Small Hall	266	330	132-198

Hall	Largest hall	Area (m ²)	Capacity (people)	
			Theater	School
MEETING SPACE AP INOGATE OSAKA [Contact] ap-inogate@tc-forum.co.jp [Address] 11F, Inogate Osaka, 3-2-123 Umeda, Kita-ku, Osaka Total area for rent: 1,077m ² Maximum capacity: 552 people Total no. of conference rooms: 12 rooms	J+K	194	—	126
Sky Theater MBS [Contact] +81-6-6676-8466 [Address] JP Tower Osaka 6F, 3-2-2 Umeda, Kita-ku, Osaka Total area for rent: — Maximum capacity: 1,289 people Total no. of conference rooms: 1 room	Sky Theater MBS	—	1,289	—

UMEDA SOUTH HALL

A large conference facility with easy access

The hall is conveniently located with easy access from JR and private railway stations. The two halls (small and large) and the foyer together provide a space of approximately 1,700 m². Equipped with a large freight elevator, so smooth transporting is possible.

[Contact] +81-6-4256-5560
 [Address] Osaka Umeda Twin Towers South 11F, 1-13-1 Umeda, Kita-ku, Osaka



Name of venue	No. of halls	Area (m ²)	Capacity (people)	
			Theater	School
Large Hall	1	882	900	600
Small Hall	1	180	140	100
Foyer	—	641	—	—



Large Hall

UMEDA SKY BUILDING (Conference Room and Event Hall)

15 venues to meet diverse needs

A total of 15 venues are available to host small- to large-scale events of up to 700 people. Excellent view from high floors! Rates are the same on weekdays, weekends, and holidays. The reasonable rate system is appealing.

[Contact] +81-6-6440-3901
 [Address] 1-1-88 Oyodonaka, Kita-ku, Osaka



Name of venue	No. of halls	Area (m ²)	Capacity (people)	
			Theater	School
Stella Hall	1	684	702	432
Conference Room	10	69-210	64-180	36-120
Sky Room	2	165-280	110-240	72-144
Space 36	2	190-270	160-248	96-150



1 Conference Room A 2 Stella Hall 3 Sky Room

Umeda Center Building

(Rental Conference Room, White Hall, Crystal Hall)

From small to large, a wide variety of conference rooms are available

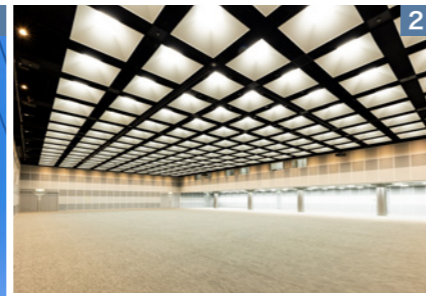
The spacious Crystal Hall, with a ceiling height of 4.8 meters and total floor space of 839 m², is equipped with a business meeting room and three waiting rooms as well as a foyer and a seminar room. The White Hall, which offers a panoramic view of Osaka from the 31st floor, is perfect for parties.

[Contact] +81-6-6373-9981

[Address] 2-4-12 Nakazaki-nishi, Kita-ku, Osaka



Name of venue	No. of halls	Area (m ²)	Capacity (people)	
			Theater	School
Crystal Hall	1	839	600-700	500
White Hall	1	280	—	117
Conference Room	17	45-280	—	18-150



1 Exterior 2 Crystal Hall 3 Conference Room H

OVAL HALL

An egg-shaped multi-purpose hall with a maximum capacity of 486 people

There are rental halls in the Mainichi Shimbun Building, including an eye-catching egg-shaped OVAL HALL that can accommodate up to 486 people. The building also houses Umeda M Hall, which has eight conference rooms of varied sizes to meet diverse needs.

[Contact] +81-6-6346-8351

[Address] 3-4-5 Umeda, Kita-ku, Osaka



Name of venue	No. of halls	Area (m ²)	Capacity (people)	
			Theater	School
OVAL HALL	1	339	486	333
Umeda M Hall (Sakura to Hiiragi)	8	10-195	6-180	24-139



OVAL HALL

Knowledge Capital

A meeting space fully equipped with the latest AV facilities

Directly connected to Osaka Station, Knowledge Capital is a hub where diverse knowledge and people from around the world come together. The theater hosts performing art events, press conferences, and research presentations, while the conference rooms are ideal for training sessions, exhibitions, and various types of meetings.

[Contact] +81-6-6372-6530

[Address] Grand Front Osaka North Building, 3-1 Ofuka-cho, Kita-ku, Osaka



Name of venue	No. of halls	Area (m ²)	Capacity (people)	
			Theater	School
Knowledge Theater (Basic Layout)	1	429	381	—
Knowledge Capital Conference Room (Tower B)	8	20~337	12~225	12~195
Knowledge Capital Conference Room (Tower C)	7	114~342	64~210	42~195
EVENT Lab.	1	1,074 (Hall: 770 people Foyer: 200 people)	Event capacity 545	



1 Knowledge Capital Conference Room 2 Knowledge Capital Conference Room 3 Knowledge Theater

Knowledge Capital Congrès Convention Center

Convention facilities directly connected to JR Osaka Station

A wide variety of venues are available, including a 1,700 m² large hall and 70 to 620 m² small and medium conference rooms and halls. Various types of events can be hosted.

[Contact] +81-6-6292-6911

[Address] Grand Front Osaka North Building B2F, 3-1 Ofuka-cho, Kita-ku, Osaka



Name of venue	No. of halls	Area (m ²)	Capacity (people)	
			Theater	School
Hall A+B+C	1	1,700	1,472	708
Halls A,B,C	3	520-620	480	252
Rooms 1 to 9	9	70-220	40-216	24-144



Hall A + B + C



HERBIS HALL

Up to 1,300 people can be accommodated for events.

Direct underground access from six terminal stations allows visitors to come free of worries about the weather. The two halls (small and large) and the foyer together provide a space of approximately 1,600 m².

[Contact] +81-6-6343-7800

[Address] HERBIS OSAKA B2F, 2-5-25 Umeda, Kita-ku, Osaka



Name of venue	No. of halls	Area (m ²)	Capacity (people)	
			Theater	School
Large Hall	1	914	1,000	600
Small Hall	1	262	300	180
Foyer	—	about 500	—	—



LARGE HALL

BREEZÉ PLAZA

Located in Nishi-Umeda, an office and cultural area

Directly connected underground from JR Osaka Station and other major stations. A small hall and five meeting and business meeting rooms are provided to accommodate a wide range of events, from corporate use to entertainment and banquets.

[Contact] +81-6-6344-4888

[Address] BREEZÉ TOWER 7/8F, 2-4-9 Umeda, Kita-ku, Osaka



Name of venue	No. of halls	Area (m ²)	Capacity (people)	
			Theater	School
Small Hall	1	266	330	132-198
Conference Room	5	59-86	48-72	24-66
Business Meeting Room	2	9	—	—



1 Exterior 2 Small Hall 3 Conference Room

MEETING SPACE AP INOGATE OSAKA

A meeting space fully equipped with the latest AV facilities

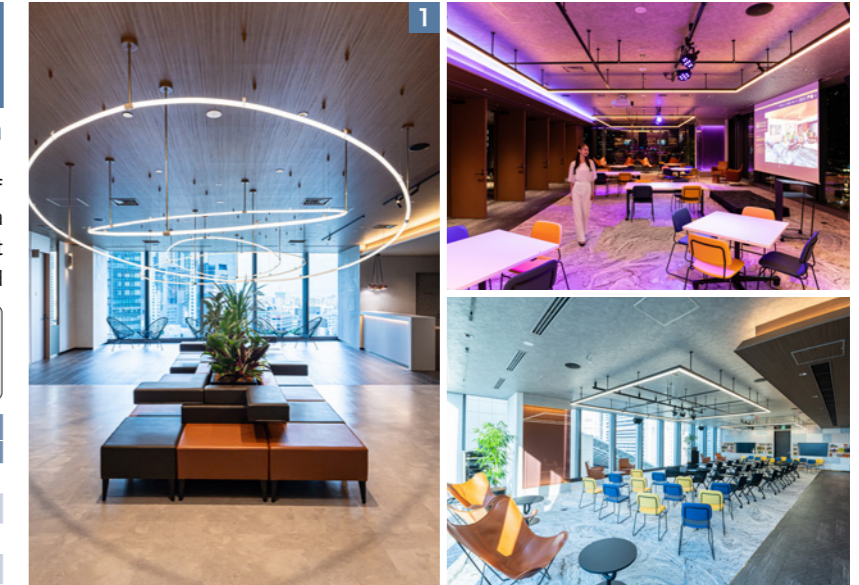
A meeting space has opened on the 11th floor of "INOGATE OSAKA," directly connected to JR Osaka Station. Equipped with the latest AV technology, it accommodates meetings, training sessions, and hybrid events that combine in-person and online participants.

[Contact] ap-inogate@tc-forum.co.jp

[Address] 11F, Inogate Osaka, 3-2-123 Umeda, Kita-ku, Osaka



Name of venue	No. of halls	Area (m ²)	Capacity (people)	
			Theater	School
H+I	1	190	—	126
D	1	186	—	108
J+K & Creative Lounge	1	344	—	126
J+K	1	194	—	126
C	1	110	—	60



1 Entrance Lobby 2 Creative Lounge : Party 3 Creative Lounge : Presentation

Sky Theater MBS

A comfortable theater space with particular attention to usability

A 1,289-seat theater in JP Tower Osaka, directly connected to Osaka Station. Complete with state-of-the-art equipment and a stage mechanism highly adjustable to the needs. Available for symposia and lectures as well as plays and musicals.

[Contact] +81-6-6676-8466

[Address] JP Tower Osaka 6F, 3-2-2 Umeda, Kita-ku, Osaka



Name of venue	No. of halls	Area (m ²)	Capacity (people)	
			Theater	School
1st Floor Seats	—	—	871	—
2nd Floor Seats	—	—	418	—



1 Exterior 2 Seats 3 Lobby *Illustration



Hotels

The Osaka Umeda area boasts approximately 3,000 guest rooms* within an 800-meter radius, ranging from top international luxury brands to reasonably priced hotels.

Available for a diverse range of needs, including accommodating participants of large-scale MICE events and hosting special receptions.

*As of 2023

Hall	Main hall area (㎡)	Capacity (people)		Party (people)		No. of other halls	Total no. of guest rooms
		School	Theater	Buffet	Formal dinner		
Aloft Osaka Dojima [Contact] +81-6-4796-6662 [Address] 2-1-31 Dojimahama, Kita-ku, Osaka	—	—	—	—	—	—	305
InterContinental Osaka [Contact] +81-6-6374-5700 [Address] 3-60 Ofuka-cho, Kita-ku, Osaka	400	288	400	250	200	3	272
THE WESTIN OSAKA [Contact] +81-6-6440-1111 [Address] 1-1-20 Oyodonaka, Kita-ku, Osaka	900	600	1,100	1,000	500	7	303
The Ritz-Carlton, Osaka [Contact] +81-6-6343-7000 [Address] 2-5-25 Umeda, Kita-ku, Osaka	1,174	800	1,500	1,000	770	8	291
Hilton Osaka [Contact] +81-6-6347-7111 [Address] 1-8-8 Umeda, Kita-ku, Osaka	823	500	1,000	1,000	600	16	562
HOTEL GRANVIA OSAKA [Contact] +81-570-06-1235 [Address] 3-1-1 Umeda, Kita-ku, Osaka	562	330	530	400	300	10	726
Hotel Hankyu International [Contact] +81-6-6377-2100 [Address] 19-19 Chayamachi, Kita-ku, Osaka	1,100	600	1,000	750	550	12	168
Hotel Monterey Osaka [Contact] +81-6-6458-7111 [Address] 3-3-45 Umeda, Kita-ku, Osaka	652	432	500	500	350	8	194
THE OSAKA STATION HOTEL, Autograph Collection [Contact] +81-6-6105-1874 (Representative number) [Address] 3-2-2 Umeda, Kita-ku, Osaka	742	546	960	900	420	4	418

Aloft Osaka Dojima

Marriott's next generation lifestyle hotel for music creators and music lovers in the heart of Osaka

Located just a 7-minute walk from the Sakurabashi Exit of JR Osaka Station, the convenient access to Umeda and Nakanoshima makes it an ideal base for both business and leisure. The wide and open-space restaurant hosts a myriad of events, including music, corporate and wedding after-parties.

[Contact] +81-6-4796-6662
[Address] 2-1-31 Dojimahama, Kita-ku, Osaka



1 Exterior 2 Hotel lobby 3 All-day dining restaurant: The WAREHOUSE

InterContinental Osaka

A luxury hotel just 5 minutes' walk from nearby stations

A large ballroom where gentle lighting shines through a ceiling object reminiscent of the patterns of traditional Japanese looms. A striking medium ballroom with wainscot lined with five different types of cherry trees. Japanese traditions come alive in these attractive venues. Available for parties, exhibitions, and other purposes.

[Contact] +81-6-6374-5700
[Address] 3-60 Ofuka-cho, Kita-ku, Osaka



Main hall area (㎡)	School (people)	Theater (people)
400	288	400
Buffet (people)	Formal dinner (people)	No. of other banquet halls/ conference rooms
250	200	3



1 Large ballroom: HINOKI 2 Medium ballroom: SAKURA 3 Small meeting rooms: AMBER/ONYX

THE WESTIN OSAKA

Available also for large-scale international conferences

Venues tailored to the format and the number of people can be provided through know-how gained from its extensive experience and track record. The hotel offers eight varied venues, including a large ballroom that can accommodate up to 1,000 people and a junior ballroom overlooking the greenery of a garden.

[Contact] +81-6-6440-1111
[Address] 1-1-20 Oyodonaka, Kita-ku, Osaka



Main hall area (㎡)	School (people)	Theater (people)
900	600	1,100
Buffet (people)	Formal dinner (people)	No. of other banquet halls/ conference rooms
1,000	500	7



1 Exterior 2 Large ballroom: Rose Room 3 Junior ballroom: Sara

The Ritz-Carlton, Osaka

Ideal for large-scale events, such as international conferences

A total of 10 banquet rooms are based on European design, and the Grand Ballroom can host up to 1,500 people. Depending on the purpose and scale of the event, venues can be arranged with ingenuity.

[Contact] +81-6-6343-7000
[Address] 2-5-25 Umeda, Kita-ku, Osaka



Main hall area (m ²)	School (people)	Theater (people)
1,174	800	1,500
Buffet (people)	Formal dinner (people)	No. of other banquet halls/ conference rooms
1,000	770	8



1 The Grand Ballroom 2 The Garden Room 3 The Boardroom

Hotel Hankyu International

A large space that can host events for 1,000 people

The hotel offers 13 banquet halls of various sizes, including Shion, which can accommodate up to 1,000 people in a stately space, and Kafu, a mansion-style banquet hall. Available for a range of occasions, such as conferences, seminars, exhibitions, and business meetings.

[Contact] +81-6-6377-2100
[Address] 19-19 Chayamachi, Kita-ku, Osaka



Main hall area (m ²)	School (people)	Theater (people)
1,100	600	1,000
Buffet (people)	Formal dinner (people)	No. of other banquet halls/ conference rooms
750	550	12



1 Large Banquet Hall: Shion 2 Medium Banquet Hall: Kafu 3 Small Banquet Hall: Hibiscus/Marguerite

Hilton Osaka

A total of 17 venues, including the prestigious Sakura Hall, are available

A grand ballroom named Sakura can accommodate up to 1,000 people and features a luxurious and prestigious interior. With 17 banquet rooms, including Windows, a sky banquet room, the hotel is one of the most prominent MICE venues in Osaka.

[Contact] +81-6-6347-7111
[Address] 1-8-8 Umeda, Kita-ku, Osaka



Main hall area (m ²)	School (people)	Theater (people)
823	500	1,000
Buffet (people)	Formal dinner (people)	No. of other banquet halls/ conference rooms
1,000	600	16



1 Exterior 2 Grand Ballroom: Sakura 3 Sky Banquet Room: Windows

Hotel Monterey Osaka

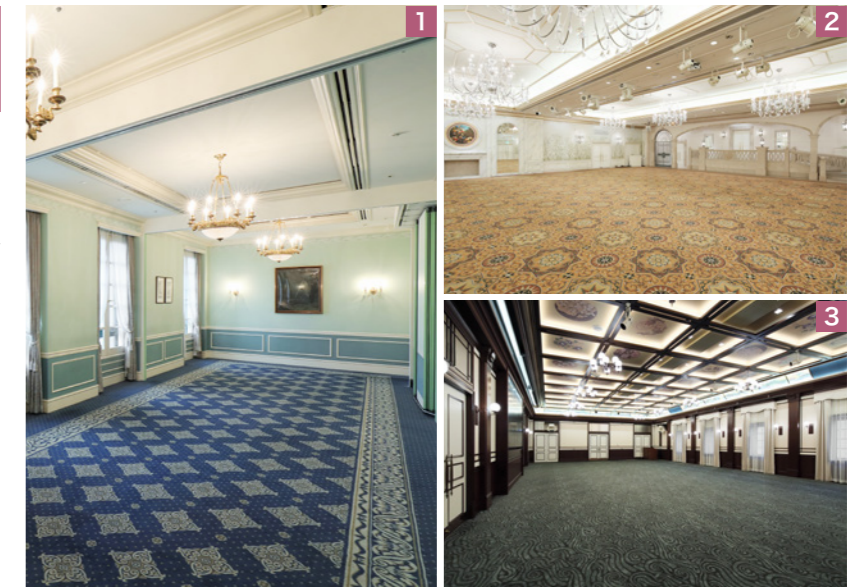
Experienced staff provide tailored proposals to meet your needs

Conveniently accessible from major stations, the hotel features an elegant interior inspired by the Austrian court culture era. It offers a variety of rooms, both large and small, suitable for conferences, exhibitions, parties, and more.

[Contact] +81-6-6458-7111
[Address] 3-3-45 Umeda, Kita-ku, Osaka



Main hall area (m ²)	School (people)	Theater (people)
652	432	500
Buffet (people)	Formal dinner (people)	No. of other banquet halls/ conference rooms
500	350	8



1 Small Banquet Room: Prelude 2 Large Banquet Room: Amalie 3 Medium Banquet Room: Rourmeikan

HOTEL GRANVIA OSAKA

Attractive location directly connected to JR Osaka Station

The hotel features 11 meeting rooms and completely private rooms that can accommodate 10 to 400 people. Experienced staff will make appropriate proposals according to the purpose of use and will respond to your requests in detail.

[Contact] +81-570-06-1235
[Address] 3-1-1 Umeda, Kita-ku, Osaka



Main hall area (m ²)	School (people)	Theater (people)
562	330	530
Buffet (people)	Formal dinner (people)	No. of other banquet halls/ conference rooms
400	300	10



1 Exterior 2 Grand Banquet Room: Naniwa 3 Medium Banquet Room: Kiri

THE OSAKA STATION HOTEL, Autograph Collection

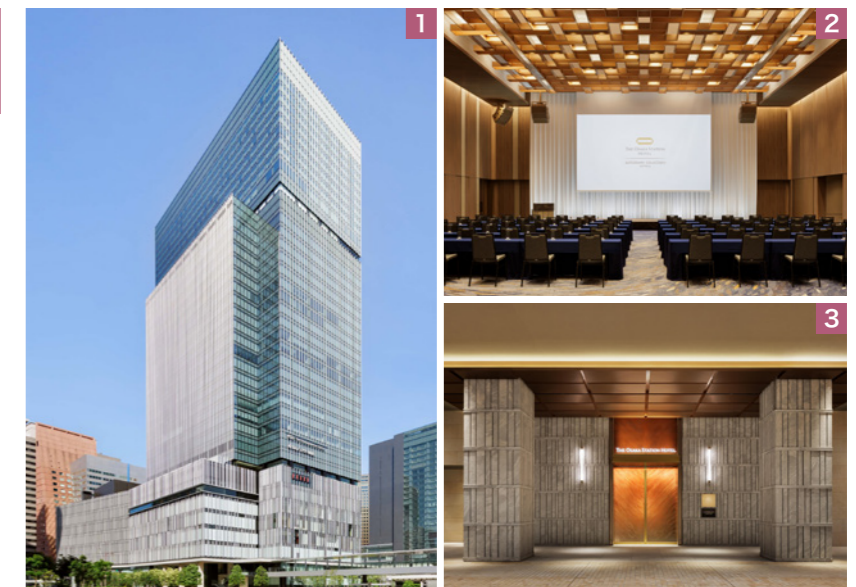
A new hotel brand opened in summer 2024

From THE BALLROOM to PRIVATE ROOM, all five rooms are located on one floor. Our banquet rooms are equipped with state-of-the-art audio visual systems so they are suitable for meetings, conferences, and exhibitions.

[Contact] +81-6-6105-1874 (Representative number)
[Address] 3-2-2 Umeda, Kita-ku, Osaka



Main hall area (m ²)	School (people)	Theater (people)
742	546	960
Buffet (people)	Formal dinner (people)	No. of other banquet halls/ conference rooms
900	420	4



1 Exterior (JP TOWER OSAKA) 2 Grand ballroom: THE BALLROOM 3 Hotel entrance
※ Illustrations

Commercial Facilities/ Entertainment

The Osaka Umeda area is home to a variety of entertainment spots along with department stores and commercial facilities, each with its own distinct character.

A perfect after-MICE destination to suit your time and needs.

Hankyu Department Store Hankyu Department Store Umeda Main Store

A department store that offers stylish, up-to-date goods and services from Japan and abroad through a theater-like shopping experience

The latest fashion and lifestyle items are lined up to make every day fun and fulfilling, together with a range of hands-on events. Enjoy an exciting shopping experience.

[Opening hours] 10:00-20:00 (Restaurants on 12/13F: 11:00-22:00)
[Holidays] No scheduled holidays
[Contact] +81-6-6361-1381
[Address] 8-7 Kakuda-cho, Kita-ku, Osaka

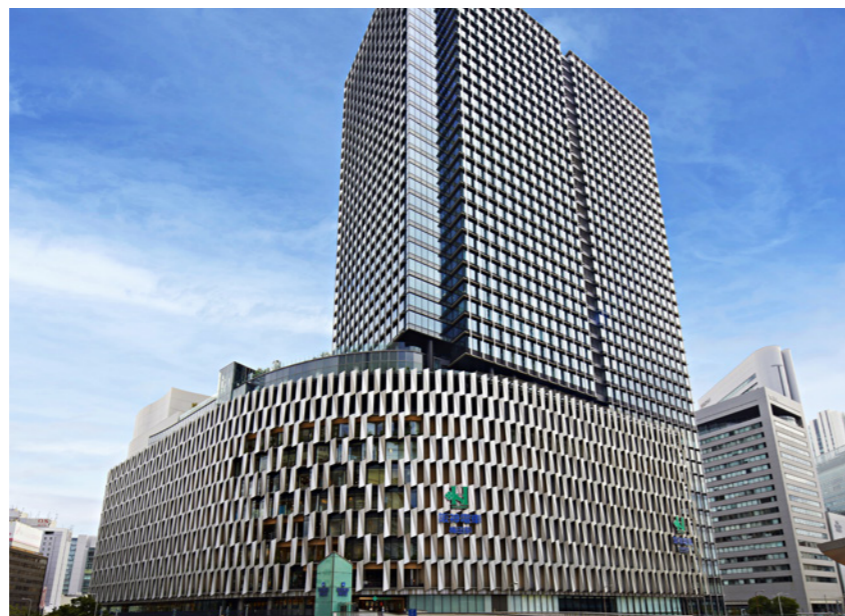


Hanshin Department Store Hanshin Department Store Umeda Main Store

Hanshin Food, full of commitment

A department store with an overwhelming selection of food products and specialties, featuring a bustling underground grocery section, a select shop where you can buy snacks from all over the country, and a food hall where you can find Osaka's delicacies.

[Opening hours] 10:00-20:00 (Restaurants/Cafes: Vary depending on the location)
[Holidays] No scheduled holidays
[Contact] +81-6-6345-1201
[Address] 1-13-13 Umeda, Kita-ku, Osaka



GRAND FRONT OSAKA SHOPS & RESTAURANTS

Directly connected to JR Osaka Station, one of the largest shopping facilities in Japan

A large-scale commercial complex that houses a variety of fashion stores and beauty services, as well as fine restaurants, bars, and more

[Opening hours] Shops: 11:00-21:00, Restaurants/Umekita Dining/Umekita Floor: 11:00-23:00, Umekita Cellar: 10:00-22:00
[Holidays] No scheduled holidays
[Contact] +81-6-6372-6300
[Address] 4-1 (Umekita Plaza), 4-20 (South Building), 3-1 (North Building), Ofuka-cho, Kita-ku, Osaka



NU chayamachi/ NU chayamachi PLUS

From the latest fashion to gourmet food

A commercial facility with easy access from Hankyu Osaka-umeda Station. Based on the concept of "new playful adulthood," approximately 70 stores are gathered. Tower Records, well-known select stores, and restaurants are all located here.

[Opening hours] Shops: 11:00-21:00, Restaurants: 11:00-23:00, TOWER RECORDS: 11:00-22:00
[Holidays] No scheduled holidays
[Contact] +81-6-6373-7371
[Address] 10-12 (NU chayamachi), 8-26 (NU chayamachi PLUS), Chayamachi, Kita-ku, Osaka



HERBIS PLAZA/ HERBIS PLAZA ENT

A commercial facility that represents Nishi-umeda

A landmark in Nishi-Umeda, home to flagship stores of world-class luxury brands, a wide variety of specialty stores, and authentic dining. It also has a theater dedicated to the Shiki Theater Company.

[Opening hours] (HERBIS PLAZA) Shops: 11:00-20:00, Restaurants: 11:00-22:30 (HERBIS PLAZA ENT) Shops: 11:00-20:00, Restaurants: 11:00-23:00, Beauty and School: 11:00-21:00
[Holidays] No scheduled holidays
[Contact] +81-6-6343-7500
[Address] 2-5-25 (HERBIS PLAZA), 2-2-22 (HERBIS PLAZA ENT), Umeda, Kita-ku, Osaka



HANKYU SANBAN GAI

A shopping center directly connected to Hankyu Osaka-umeda Station

Based on the concept of a "museum station," it features approximately 240 establishments with something for everyone, including stores offering fashion, miscellaneous goods, hobby goods and gourmet items, restaurants, and coffee shops.

[Opening hours] Shops: 10:00-21:00,
Restaurants: 10:00-23:00
[Holidays] No scheduled holidays
[Contact] +81-6-6371-3303
[Address] 1-1-3 Shibata, Kita-ku, Osaka



LUCUA osaka

One of the largest commercial station-linked complexes in Japan

Composed of two buildings - western LUCUA 1100 and eastern LUCUA - that are operated as one entity. It offers a relaxing place to shop around as well as convenience and ease to drop by.

[Opening hours] Shopping Floors (B1F to 9F): 10:30-20:30, LUCUA Dining (10F) / BARCHICA & LUCUA FOOD HALL (B2F): 11:00-23:00 *Excluding some stores
[Holidays] No scheduled holidays
[Contact] +81-6-6151-1111
[Address] 3-1-3 Umeda, Kita-ku, Osaka



HEP FIVE

Look at the giant whale in the atrium.

This fashion building, which combines amusement and entertainment, houses about 150 stores that attract young people. In 2023, the restaurant and cafe floor on the 7th floor was renovated and opened as TAMLO.

[Opening hours] Shops: 11:00-21:00,
Restaurants: 11:00-22:30, Amusement: 11:00-23:00
[Holidays] No scheduled holidays
[Contact] +81-6-6313-0501
[Address] 5-15 Kakuda-cho, Kita-ku, Osaka

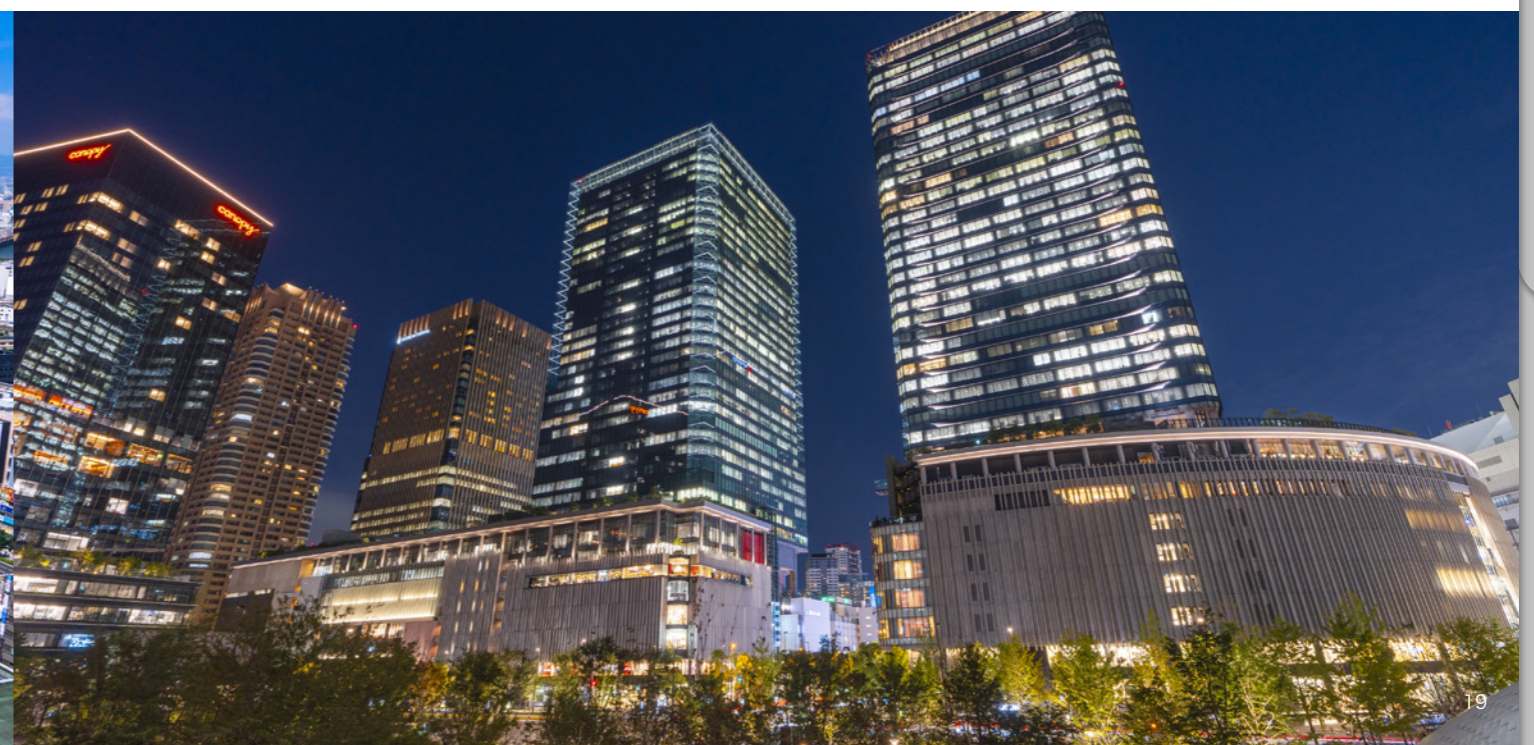


BREEZÉ BREEZÉ

Direct access to major stations via underground passages

With the key concept of "Surprise is the best hospitality," it consists of approximately 30 establishments offering fashion, miscellaneous goods, food, and services. Markets and concerts are held occasionally at the event plaza on the first floor.

[Opening hours] Shops: 11:00-20:00,
Restaurants: 11:00-22:00 *Excluding some locations
[Holidays] No scheduled holidays
[Address] 2-4-9 Umeda, Kita-ku, Osaka



Billboard Live Osaka

A live space to immerse yourself in the best music

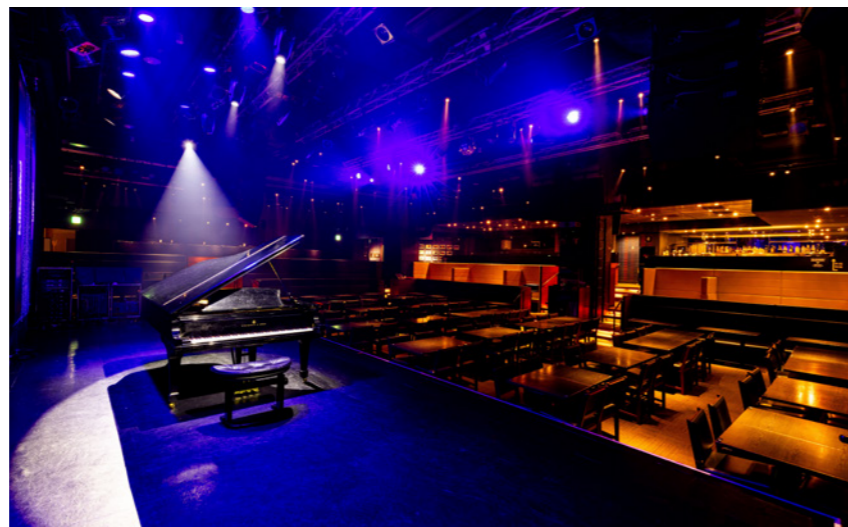
A club and restaurant where you can enjoy top artists from Japan and abroad on stage in a sophisticated atmosphere, along with meals made with seasonal ingredients

[Opening hours] Vary depending on the performance
*Please check the performance schedule through the 2D code below.

[Holidays] No scheduled holidays

[Contact] +81-6-6342-7722

[Address] HERBIS PLAZA ENT B2, 2-2-22 Umeda, Kita-ku, Osaka



DIAMOR OSAKA

A comfortable underground shopping space seamlessly integrated with Osaka Umeda's transportation network.

Constantly evolving to meet the needs of urban professionals, DIAMOR OSAKA primarily targets office workers and business people seeking a sophisticated urban lifestyle, offering high-quality fashion, goods, and information.

[Opening hours] Shop: 10:00-21:00 / Restaurants: 10:00-22:00 *Please note that some stores may have different hours.

[Holidays] Irregular

[Address] DIAMOR OSAKA, 1-Chome Umeda, Osaka City



Umeda Sky Building Kuchu Teien Observatory

Exclusive panoramic view of Osaka!

This landmark offers a 360-degree view from a height of 173 meters above ground. At night, luminescent stones shine at your feet, making you feel like you are walking on a starry sky.

[Opening hours] 9:30-22:30 (Last admission: 22:00)

[Holidays] No holidays [Contact] +81-6-6440-3855

[Address] 1-1-88 Oyodonaka, Kita-ku, Osaka



HEP FIVE Ferris Wheel

Amusement park-like feeling in the middle of the city

An eye-catching red Ferris wheel in the center of the Osaka Umeda district. Visitors can enjoy a view of Osaka Castle and Mt. Ikoma during the day on a clear day and a sparkling night view at night.

[Opening hours] 11:00-22:45 (Last admission)

[Holidays] No scheduled holidays [Contact] +81-6-6366-3634

[Address] 5-15 Kakuda-cho, Kita-ku, Osaka



Unique Venues/ Experiences

From state-of-the-art buildings to retro townscape, each venue in the Osaka Umeda district shows a distinct character.
Why not spend a special time in a place where you can feel the characteristics and culture of the area?

Toki-no-hiroba Plaza

A large rooftop space that is covered by a giant dome and overlooks the railroads like a diorama

The plaza located on the roof of JR Osaka Station and covered by a huge dome is a large open space where visitors can see the trains coming and going underneath. A Gold Clock and a Silver Clock placed on the north and south sides and a colonnade inspired by gas lamps create a varied atmosphere of time.

[Plaza hours] 8:00-23:30 (Opening hours of the plaza)

[Area] Approximately 225㎡ (Event space)

[Traffic volume] Weekdays: 17,000 people,

Holidays: 43,000 people

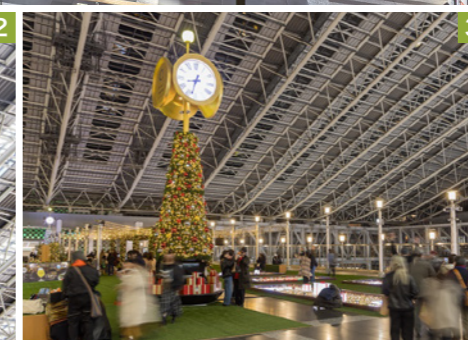
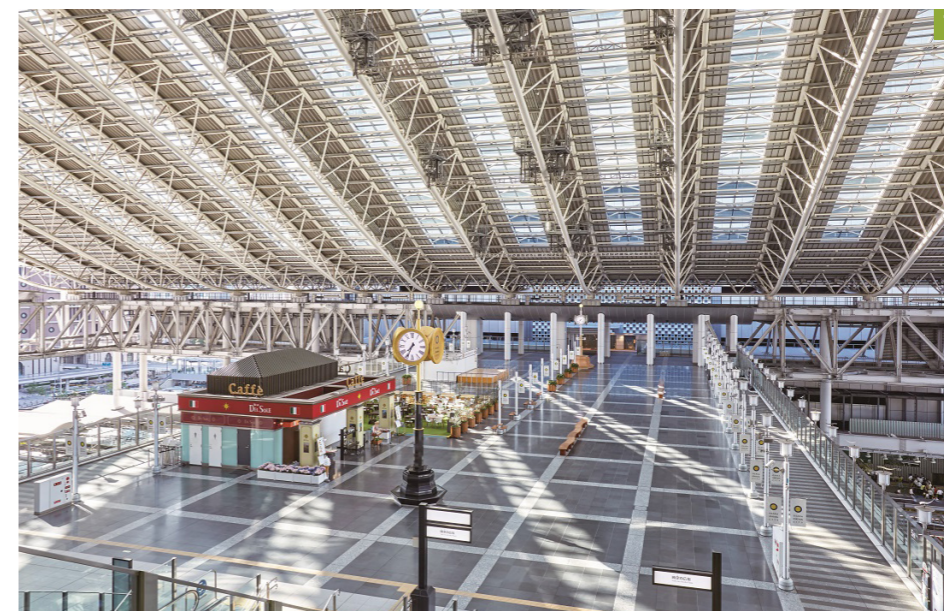
[Contact] +81-6-6458-0212

(Osaka Station City Information)

[Address] 3-1-1 Umeda,

Kita-ku, Osaka

(JR Osaka Station 5F Bridge)



1 Panoramic view 2 Gold clock tower
3 View during an event



Umekita Park

Directly connected to JR Osaka Station, one of the largest urban parks linked to a major terminal station in the world.

The urban park is composed of South Park, an urban space, and North Park, a nature-rich area (partially scheduled to open in spring 2027). It features restaurants for receptions and a museum (VS.) that can host exhibitions and events, along with other amenities. The surrounding area includes event spaces, offering a unique experience with a view of the vast greenery. Please note that there may be periods when access to the lawn area is restricted for maintenance.

[Hours] Vary depending on the shops
 [Area] 45,000m²
 [Contact] <https://umekita.com/ad/contact/index.html>
 [Address] 5 & 6 Ofuka-cho, Kita-ku, Osaka



1 Umekita Park (South Park)
 2 Umekita Park (Panorama View)
 3 VS.



ROHTO HEART SQUARE UMEKITA

An 11m roofed, all-weather event space

The all-weather event space, regarded as a symbol of Umekita Park, is accessible from JR Osaka Station without exposure to the rain. The venue is well-equipped with infrastructure, offering flexibility for different uses, from ceremonies and symposiums to receptions.

[Hours] 9:00~22:00
 [Area] Approximately 1,500m² (roofed)
 [Capacity] Approximately 1,000 people (seated), depending on the event details.
 [Contact] +81-6-6136-4412
 (GRAND GREEN OSAKA Event Space Operation Center)
 [Address] 5 Ofuka-cho, Kita-ku, Osaka



1 ROHTO HEART SQUARE UMEKITA (Exterior)
 2 ROHTO HEART SQUARE UMEKITA (Inside View)
 3 View during an event



UMEDA SKY BUILDING Wonder Square

A huge atrium space with a height of 150m and surrounded by a floating garden and two buildings

This is an outdoor event space located in between the eastern and western towers of the UMEDA SKY BUILDING. The vast atrium space of 1,700m² with a height of 150 m is ideal for large-scale events. On the premises, there is also a forest that is home to a wide variety of trees and other living creatures, showing a perfect harmony of nature and a manmade structure.

[Area] 1,700m²
 [Capacity] 1,000 people
 [Contact] +81-6-6440-3901 (Sekisui House Umeda Operation)
 [Address] 1-1-88 Oyodonaka, Kita-ku, Osaka



1 Panoramic view 2 View during an event 3 Island Garden Forest



OSAKA FOOD LAB

Outdoor but covered extensive event space with kitchen

Japan's first food business incubation facility (food experimentation site) under the elevated Hankyu train tracks. The semi-outdoor space, approximately 700 m² in size, allows events to be held even in the rain. One of the attractive features is the professional container kitchen.

[Hours] Please contact the administration office.
 [Area] Approximately 700m²
 [Capacity] Approximately 200 people (estimate)*Varies depending on the event
 [Contact] +81-70-4141-9162 (Administration office)
 [Address] 1-1-36 Nakatsu, Kita-ku, Osaka



1 Interior 2 Exterior 3 Container kitchen

Sonezaki Ohatsu Tenjin Dori Arcade

**Delicious and enjoyable every time you visit!
A place associated with the love story "Sonezaki Shinju"**

Located in close proximity to JR Osaka Station and Umeda Station on various lines, "Omitsu Tenjin-dori Shopping Street" is a path leading to the renowned open-air Tsuyu-no-tenjin Shrine, famous for the love story "Sonezaki Shinju". With over 100 shops ranging from long-established establishments that have been around for decades to trendy hotspots popular among young people, the street is bustling with activity.

[Opening hours] Vary depending on the location
[Holidays] Vary depending on the location
[Address] 2 Sonezaki, Kita-ku, Osaka



Shin-Umeda Shokudogai

A restaurant district with a history of more than 70 years

A restaurant street under an elevated railway track that opened in 1950. About 100 eateries, mainly izakaya (Japanese style pubs), are lined up in the maze-like space. A wide genre of food is offered, such as oden, okonomiyaki, and Western-style cuisine. It's an ideal spot for a small group drinking party or to enjoy bar hopping.

[Opening hours] Vary depending on the location
[Holidays] Vary depending on the location
[Contact] +81-6-6372-0313 (Shin-Umeda Shokudogai Association)
[Address] 9-26 Kakuda-cho, Kita-ku, Osaka



Universal Studios Japan

Original plans for groups available

The theme park is based on movies and characters loved around the world and enjoys tremendous support from people both in Japan and abroad. You will spend a dream-like time with its original party plan that allows you to choose the entertainment you want to experience based on the number of people in your party.

[Opening hours] Please check the official website
[Holidays] No holidays
[Contact] +81-570-20-0606 (Information Center)
[Address] 2-1-33 Sakurajima, Konohana-ku, Osaka



Image provided by Universal Studios Japan TM & ©Universal Studios. All rights reserved.

Osaka Castle Tower

A symbol that tells the history of Osaka

This is the third generation building following the ones built in the Toyotomi and Tokugawa periods, and it was restored in 1931 with donations from citizens. The 55-meter-high, five-tier, eight-floor building has a museum inside, housing and exhibiting numbers of cultural properties. It has been designated as a national tangible cultural property in recognition of its outstanding modern architecture.

[Opening hours] 9:00-17:00 (Last admission: 16:30)
[Closed] December 28 to January 1
[Contact] +81-6-6941-3044
[Address] 1-1 Osaka-jo, Chuo-ku, Osaka



©Osaka Convention & Tourism Bureau

Nakazaki-cho

Have fun strolling alleys in a retro townscape

In the rapidly changing Umeda district, this area still retains a strong downtown atmosphere. Dotted with wooden houses and tenements built in the Taisho to early Showa eras that survived the war, the nostalgic streets provide many hideout restaurants and are popular among young generations.

[Address] Nakazaki, Kita-ku, Osaka



Umeda Underground Shopping Area

One of the largest underground shopping malls in Japan

Osaka Umeda's underground mall, which connects seven stations and surrounding commercial facilities, is also known as the Umeda Dungeon due to its complexity. With attractive shopping streets and areas to enjoy dining and drinking to the fullest, the area draws people of all ages, from the young to the elderly.



The Osaka Museum of Housing and Living Osaka Museum of Living Past and Present

First in Japan! A museum with the theme of "home"

The town of Osaka in the Edo period about 200 years ago has been recreated using traditional construction methods. Life-size townhouses are lined up in an exhibition room on the ninth floor of the building, and depending on the time of day, sound and lighting effects are used to create morning, noon, and night scenes. A kimono wearing experience here is also popular.

[Opening hours] 10:00-17:00 (Last admission: 16:30)
[Closed] Tuesdays, Dec. 29 to Jan. 3 *Temporary closure may take place.
[Contact] +81-6-6242-1170
[Address] Housing Information Center 8F, 6-4-20 Tenjinbashi, Kita-ku, Osaka



Osaka City Central Public Hall

An important cultural property that can host meetings and receptions

Since its completion in 1918, this historical building has long been an integral part of the Osaka Nakanoshima landscape for its beauty. Although it is an important cultural property designated by the national government, it is open to anyone as a place for cultural, art, and exchange activities. A large assembly room and other meeting and conference rooms are also available.

[Available hours] 9:30-21:30
[Area] Approximately 1,303 m² (Large assembly room 1st floor + 2nd floor)
[Capacity] 1,161 people (Theater)
[Contact] +81-6-6208-2002 (9:30-20:00)
[Address] 1-1-27 Nakanoshima, Kita-ku, Osaka



UMEDA EVENT CALENDAR

Please consult with DMO regarding coordination with existing area events that are held each season.

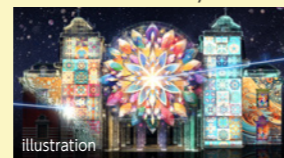
Osaka Art & Design June



UMEDA ARUKU FES October



Festival of the lights in OSAKA November to January



Candle Night June/December



Jan. Feb. Mar. Apr. May. Jun. Jul. Aug. Sep. Oct. Nov. Dec.



Umeda Yukata Festival July



Osaka Diamond Festa October



UMEDA GOSPEL FESTIVAL December



UMEDA MEETS HEART December

*Times of events are subject to change.

Photo of the Festival of the lights in OSAKA provided by ©Osaka Festival of Lights Organizing Committee

Osaka Aqua Bus Cruise Ship Himawari

A chartered cruise to experience the aqua metropolis Osaka

This elegant cruise boat was built in the motif of a river steamboat that used to ply the Yodo River in the Meiji era. Guests can have meals on board in a relaxed atmosphere, calmed by the wood-grained interior, and enjoy the seasonal landscapes from the open deck.

[Duration] 50 to 120 minutes
[Contact] +81-570-07-5551 (Himawari Booking Center)
[Capacity] 30 to 60 people

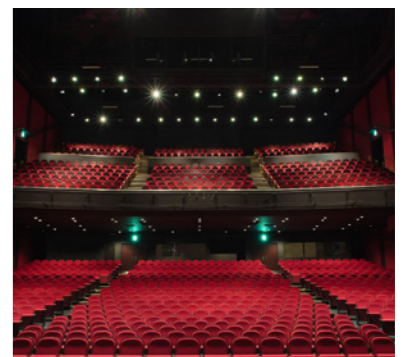


Osaka Shiki Theater

Watch a heart-stirring musical masterpiece.

The base theater of the Shiki Theater Company, a popular theater company established in 1953. Many long-running performances, including masterpieces of foreign musicals and original works, provide a superb theater experience throughout the year.

[Opening hours] Vary depending on the performance
[Contact] +81-570-008-110
[Address] HERBIS PLAZA ENT 7F, 2-2-22 Umeda, Kita-ku, Osaka



Nakanoshima Museum of Art, Osaka

A variety of events in an art space

Opened in 2022 an auditorium with capacity for 300 people, a workshop room, an outdoor grassy plaza, and a passage space with an open atrium atmosphere are available for meetings, receptions, and other events. Catering is also available from restaurants in the museum (upon request).

[Available hours]
Basically 9:00-17:00
(After-hours: Negotiable)
[Area] Approximately 300㎡ (hall)
[Capacity] 300 people (hall)
[Contact] +81-6-6479-0550 (Japanese only)
[Address] 4-3-1 Nakanoshima, Kita-ku, Osaka



Knowledge Capital The Lab. The world's best laboratory for everyone by everyone

Have fun learning about cutting-edge technology and research

An exhibition facility that provides an easy-to-understand introduction to cutting-edge technologies developed by companies and universities and their activities. The exhibition showcases a variety of interactive content and prototypes of products, services and projects that everyone can enjoy and learn from.

[Opening hours] 10:00-21:00
[Closed] January 1
[Contact] +81-6-6372-6530
[Address] Grand Front Osaka North Building Knowledge Capital 2/3F, 3-1 Ofuka-cho, Kita-ku, Osaka



Koji Kinutani Tenku Art Museum

A colorful and artistic world unfolds on an upper floor of a building

The museum exhibits works by Koji Kinutani, a leading figure in the Japanese art world. Paintings in affresco (a classical technique of mural painting), sculptures, and a 3D video experience that plunges visitors into the paintings invite you into the heroic and eccentric world of Kinutani.

[Opening hours] 10:00-18:00, Fridays, Saturdays, the day before holidays: 10:00-20:00 (Last admission: 30 minutes before closing)
[Closed] Tuesdays (closed the following weekday if Tuesday is a national holiday), year-end and new year holidays, exhibition replacement periods
[Contact] +81-6-6440-3760
[Address] 1-1-30 UMEDA SKY BUILDING Tower West 27F, Oyodonaka, Kita-ku, Osaka



Hand Weaving Workshop SAORI toyosaki

Original scarf made with your favorite yarns

A hands-on Saori Weaving workshop where you can weave freely without being restricted by illustrations. You can make an original scarf by choosing your favorite yarns from a large selection available. The atmosphere of the workshop, a renovated Meiji-era tenement house, is also lovely.

[Workshop hours]
1: from 10:30,
2: from 13:30,
3: from 16:30
(About 2 hours each)
[Holidays] Fridays
[Contact] +81-6-6376-0410
[Address] 1-7-2 Toyosaki, Kita-ku, Osaka



Yamamoto Noh Theater

Noh theater with extensive track record in event use

The oldest Noh theater in Osaka City. Taking advantage of the space of the cultural property, in addition to watching Nohgaku, the building has been used for events and parties as a valuable historical building for entertaining dignitaries from Japan and abroad. The theater also offers tours and trial lessons for visitors (advance application required). Interpreters can also be arranged.

[Available hours] 9:00-21:00
[Area] 588㎡ (Noh stage)
[Capacity] 150 people for standing buffet, 10-200 people for tours, 10-200 people for trial lessons
[Contact] +81-6-6943-9454
[Address] 1-3-6 Tokui-cho, Chuo-ku, Osaka



THE SUMO HALL HIRAKUZA OSAKA

Powerful Sumo Entertainment

Sumo Entertainment Show Hall opening on May 30, 2024. Watch a spectacular performance by former Sumo wrestlers while enjoying an original Makunouchi bento. Photos with the wrestlers and training lessons are also available. (Limited number of participants)

[Show time]
(1) Starts at 18:00,
(2) Starts at 21:00
(1 show lasts about 60 minutes + commemorative photo shoot)
*When there is one performance per day, the show starts at 19:00
[Holidays]
Tuesdays, Dec. 31 and Jan. 1
[Contact] hirakuza-info@hcl-c.com
[Address] Namba PARKS 8F, 2-10-70 Namba-naka, Naniwa-ku, Osaka



Sightseeing Program Enjoy sightseeing in the Kansai area based in the Osaka Umeda district

Go by Hankyu Train

Arashiyama Hannari Tour by Kyo-train Garaku

Half-day Plan

A tour to visit Arashiyama, one of the most popular touristic areas in Kyoto, by Kyo-train Garaku, a tourist train you can board only for the regular fare. The tour will take you to World Heritage sites and scenic spots.

Model course

Hankyu Osaka-umeda Station

Kyo-train Garaku

Transfer at Hankyu Katsura Station
Hankyu Arashiyama Station

Arashiyama Monkey Park Iwatayama

Arashiyama Togetsu-kyo Bridge

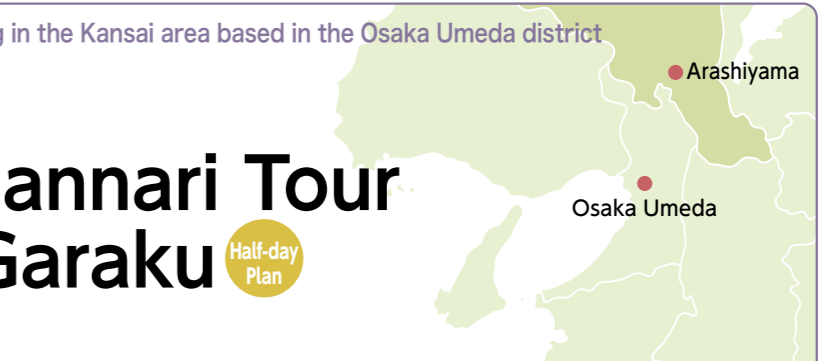
Tenryu-ji Temple

Bamboo Forest Path

Hankyu Arashiyama Station
Transfer at Hankyu Katsura Station

Kyo-train Garaku

Hankyu Osaka-umeda Station



Arashiyama Monkey Park

A park where about 120 Japanese macaques live in the wild. From the mountaintop at an elevation of 160 meters, you can view the entire city of Kyoto.

[Contact] +81-75-872-0950
[Address] 61 Nakaoshita-cho, Arashiyama, Nishikyo-ku, Kyoto



Togetsu-kyo Bridge

An iconic landmark of the Arashiyama district. It is called Togetsu-kyo Bridge, which literally translates to Moon-Crossing Bridge because it resembles the shape of the moon crossing the sky from the east to the west.

[Address] 1-5 Susukinobaba-cho, Saga Tenryuji, Ukyo-ku, Kyoto



Tenryu-ji Temple

A Zen temple built by Takauji Ashikaga and registered as a World Heritage Site. It has many attractions, such as the Sogenchi Pond Garden and Daruma-zu and Unryu-zu paintings.

[Contact] +81-75-881-1235
[Address] 68 Susukinobaba-cho, Saga Tenryuji, Ukyo-ku, Kyoto

Photo provided by Tenryu-ji Temple



Bamboo Forest Path

A 400-meter path from Nonomiya Shrine to the beautiful Okochi Sanso villa. The bamboo groves that line both sides of the path are spectacular and can be toured by rickshaw or rental bicycle.

[Address] Susukinobaba-cho, Saga Tenryuji, Ukyo-ku, Kyoto

What is Kyo-train Garaku?



Hankyu Railway's sightseeing train that runs four round trips between Osaka-umeda and Kyoto-kawaramachi stations on Saturdays, Sundays, and holidays. Based on the concept of "feeling Kyoto from the moment you step on board," each carriage is decorated with a different modern Japanese motif.

Timetable

*Operates only on Saturdays, Sundays, and holidays

Departure from Osaka-umeda	9:32	11:32	13:32	15:32
Arrival at Katsura	10:07	12:07	14:07	16:07

Departure from Katsura	10:49	12:49	14:49	16:49
Arrival at Osaka-umeda	11:28	13:28	15:28	17:28

*Train schedule is subject to change.

© Please check the website for details.

<https://www.hankyu.co.jp/kyotrain-garaku/en>

Sightseeing Program

Enjoy sightseeing in the Kansai area based in the Osaka Umeda district

Go by Hanshin Train

A tour to visit Hanshin Koshien Stadium, a sacred baseball stadium, and sake breweries in Nada

Half-day Plan

Koshien
Nada Osaka Umeda

This half-day tour takes you to Nada Gogo, one of Japan's leading sake-producing regions, and Hanshin Koshien Stadium. After learning about the history and culture of sake brewing, enjoy a stadium tour at the home of the Hanshin Tigers.

Model course



Sake Museum (Hakushika Memorial Museum of Sake)

It was established with the purpose of passing down the history and culture of traditional sake brewing. It consists of the Sakagura-kan, which is a wooden sake brewery building built in 1869, and the Kinen-kan, which exhibits materials.
[Contact] +81-798-33-0008
[Address] 8-21 Kurakake-cho, Nishinomiya



HAKUSHIKA Classics

At the brewery's restaurant, you can enjoy pairing sake with food. Banquets for up to 40 people are also available.
[Contact] +81-798-35-0001
[Address] 7-7 Kurakake-cho, Nishinomiya



Reservation required

Hanshin Koshien Stadium Tour

This tour takes visitors behind the scenes of Hanshin Koshien Stadium, which you would not be able to see normally. Advance reservation via the website is recommended. (Groups of 20 people or more can use the facility exclusively.)
[Contact] +81-798-44-3310



Museum of Hanshin Koshien Stadium

You can learn about the history of Hanshin Koshien Stadium, the Hanshin Tigers, and the high school baseball tournament. Have fun also at the virtual batting center attached to the museum.
[Contact] +81-798-49-4509
[Address] Koshien Plus 2F, 8-15 Koshien-cho, Nishinomiya

What is Nada-Go-Gō (The "Five Gō" of Nada)?

It is a general name for five sake brewing districts straddling the cities of Kobe and Nishinomiya, located in southeastern Hyogo Prefecture. From the west, the districts are called Nishigo, Mikage-go, Uozaki-go, Nishinomiya-go, and Imazu-go. Nada-Go-Gō is the birthplace of the renowned pure sake Nada no Ki-ippō.



History of Hanshin Koshien Stadium

Japan's first dedicated US Major League style baseball park built in 1924. Since then, it has been the home of the Hanshin Tigers and the sacred ground for high school baseball tournaments, creating many dramas. Having undergone a complete renewal in 2010, the stadium will celebrate its 100th anniversary in 2024.



Sightseeing Program

Enjoy sightseeing in the Kansai area based in the Osaka Umeda district

Go by JR

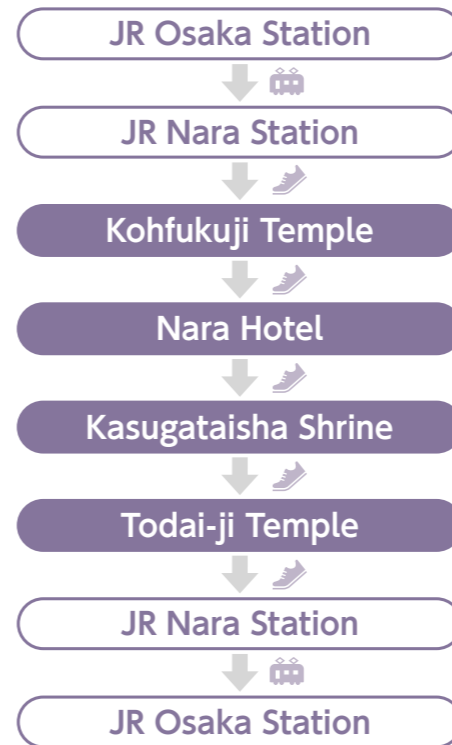
Aoniyoshi Tour to visit three World Cultural Heritage sites

Half-day Plan

Nara
Osaka Umeda

A walking tour to visit three World Cultural Heritage Sites in Nara Park: Kohfukuji Temple, Kasugataisha Shrine, and Todai-ji Temple. Enjoy an elegant lunch in a classical modern setting at the Nara Hotel, which has over 100 years of history.

Model course



Kohfukuji Temple

Founded as a temple for the Fujiwara clan. You can see many national treasures and important cultural properties, such as the Southern Round Hall, the Northern Round Hall, and the Statue of Ashura.
[Contact] +81-742-22-7755
[Address] 48 Noborioji-cho, Nara

Photo provided by Nara Visitors Bureau
Photographed by Tatehiko Yano



Nara Hotel

A classic hotel with a prestigious space in a wooden architecture. Enjoy the chef's specialties of French and Japanese cuisines for lunch.
[Contact] +81-570-66-6088 (Navidial)
[Address] 1096 Takabatake-cho, Nara

*This photo is for illustrative purposes.



Kasugataisha Shrine

Founded in 768. The shrine is brightly painted in vermilion color, and the Main Sanctuary has been designated as a national treasure. The sight of approximately 2,000 stone lanterns lining the approach to the shrine is spectacular.
[Contact] +81-742-22-7788
[Address] 160 Kasugano-cho, Nara

Kasugataisha Shrine Middle Gate/Open Veranda



Todai-ji Temple

Built at the request of Emperor Shomu for the protection of the nation. The main statue, Vairocana Buddha, or Great Buddha of Nara, is quite famous.
[Contact] +81-742-22-5511
[Address] 406-1 Zoshi-cho, Nara

Photo provided by Nara Visitors Bureau
Photographed by Kazuyoshi Miyoshi

How big is the Great Buddha of Nara?

The answer is about 15 m in height, about 3.2 m in face width, and about 2.5 m in palm length. In addition, the Great Buddha Hall, where the Great Buddha resides, is also one of the largest wooden structures in the world.



Photo provided by Nara Visitors Bureau
Photographed by Kazuyoshi Miyoshi

Nara Park, a tourist spot that symbolizes the ancient capital of Nara

A vast historical park with a total area of approximately 660 hectares, dotted with Kohfukuji Temple, Kasugataisha Shrine, Todaiji Temple, and the National Museum. Although it is located in an urban area, visitors can enjoy rich nature and wild deer, designated as a natural treasure, playing on the grounds.



About DMO Osaka Umeda

DMO Osaka Umeda is a cross-sectoral organization of more than 30 hotels and venues that work together to host and attract MICE.

We aim to enhance the brand of Umeda as an area through MICE by coordinating between facilities, sharing information, and responding to inquiries.

Our activities and businesses

DMO Osaka Umeda mainly engages in the following five activities and businesses

- 1 Providing assistance for MICE organizers in the Umeda district of Osaka
- 2 Attracting MICE events to the Umeda district of Osaka
- 3 Disseminating information about MICE facilities (hotels and conference facilities), related facilities (restaurants, product sales, and entertainment), and additional services (e.g. content available for receptions) in the Umeda district of Osaka area to visitors from across Japan and the rest of the world
- 4 Operating as a one-stop contact for inquiries from Japan and the rest of the world
- 5 Holding briefings, study sessions, and other meetings to share information among DMO Osaka Umeda members



Services for MICE organizers

Five solutions to support organizers



1 MICE venues

We suggest the best venues from among the conference facilities and hotels owned and managed by DMO member companies.



2 Reception venues

We offer ideas for unforgettable receptions at our hotels and restaurants in addition to unique venues and public spaces.



3 Activities

We offer plans for attractions both during and after main events as well as interactive experiences for MICE attendees and their families.



4 Excursions

We work with local governments and tourism organizations to take visitors on excursions in Osaka and beyond after main events.



5 Area MICE planning

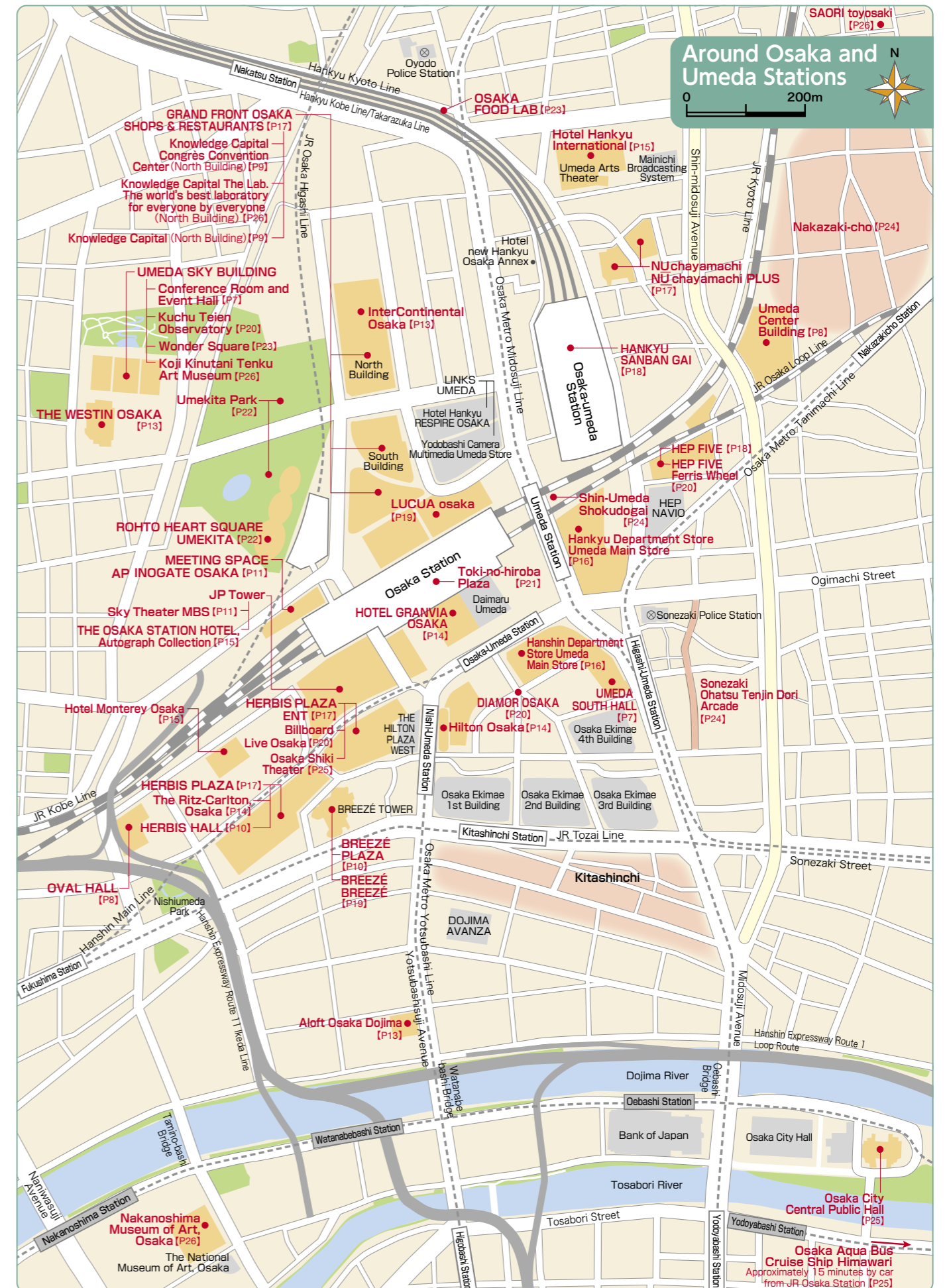
We coordinate with member facilities to propose plans that span all of Umeda for major events requiring multiple facilities or the entire district.

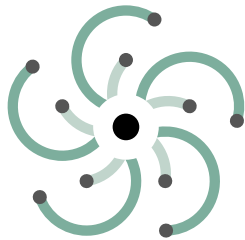
DMO Osaka Umeda

Email : dmo-osakaumeda@hhp.co.jp
HP : <https://dmo-umeda.jp/en/>

[Administrative office]

Hankyu Terminal Building,
1-1-4 Shibata, Kita-ku, Osaka,
530-0012
Hankyu Hanshin
Properties Corp.





DMO Osaka Umeda

Hankyu Terminal Building,
1-1-4 Shibata, Kita-ku, Osaka,
530-0012

Email : dmo-osakaumeda@hnp.co.jp
HP : <https://dmo-umeda.jp/en/>

List of DMO Osaka Umeda members

Regular members

Aloft Osaka Dojima
InterContinental Osaka
THE WESTIN OSAKA
UMEDA SOUTH HALL
UMEDA SKY BUILDING
Umeda Center Building
Sky Theater MBS
THE OSAKA STATION HOTEL, Autograph Collection
OVAL HALL
GRAND FRONT OSAKA SHOPS & RESTAURANTS
The Ritz-Carlton, Osaka
DIAMOR OSAKA
Knowledge Capital
Knowledge Capital Congrès Convention Center
NU chayamachi / NU chayamachi PLUS
HERBIS PLAZA / HERBIS PLAZA ENT
HERBIS HALL
HANKYU SANBAN GAI
Hankyu Department Store Umeda Main Store
Hanshin Department Store Umeda Main Store
Hilton Osaka
Billboard Live Osaka
BREEZÉ TOWER(THE SANKEI BUILDING CO.,LTD.)
HEP FIVE
HOTEL GRANVIA OSAKA
Hotel Hankyu International
Hotel Monterey Osaka
MEETING SPACE AP INOGATE OSAKA
LUCUA osaka

Supporting members

West Japan Marketing Communications Inc.
NIPPON TRAVEL AGENCY CO., LTD.
HANKYU TRAVEL INTERNATIONAL CO.,LTD.
hankyu hanshin marketing solutions Inc.

Special members

West Japan Railway Company
Hankyu Corporation
Hanshin Electric Railway Co., Ltd.

Affiliates

Osaka City Economic Strategy Bureau
Osaka Convention & Tourism Bureau